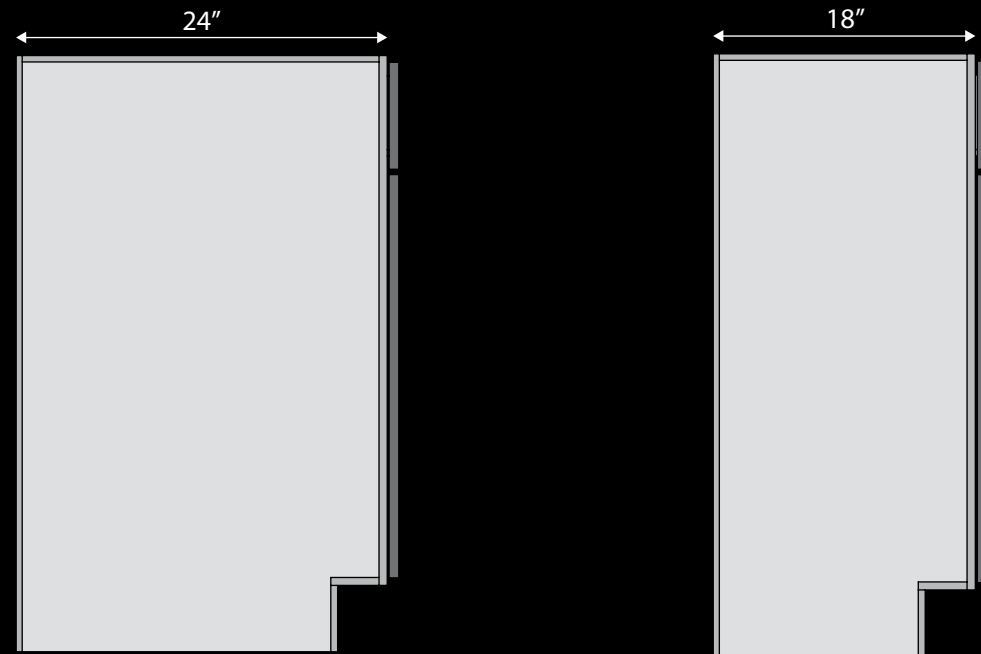


C U T - S B A S E

Reduce depth of sink base cabinet (no min.)



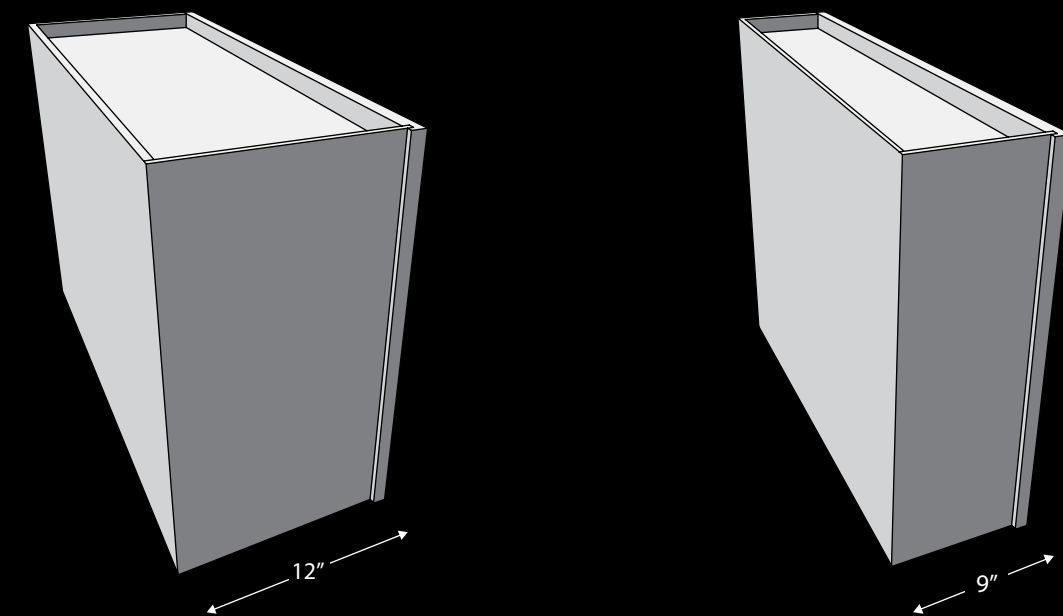
BEFORE → AFTER

As with cabinet base and drawer base, the standard sink base comes 24" deep. Fabuwood will modify the depth to customer specifications. Modifications are done in 3" increments but can also be done in custom sizes such as 16" and 17" deep.

Because there are no drawer slides to take into account, sink base cabinets can be cut to any depth with no minimum. Generally, customizations are done in 3" increments, but can also be done to a custom size, such as 16", 17", or even 17½" deep.

C U T - W A L L

Reduce depth of a wall cabinet (no min.)



BEFORE → AFTER

Wall cabinets come standard at 12" deep, but can be customized to customer requirements. Generally, modifications will be made in 3" increments, but can also be cut to custom sizes

such as 4", 5", or even 5½" deep. Wall cabinets can be cut to any size, with a minimum depth of 3". Note: for a No Door wall cabinet, wood shelves will be provided instead of glass shelves.