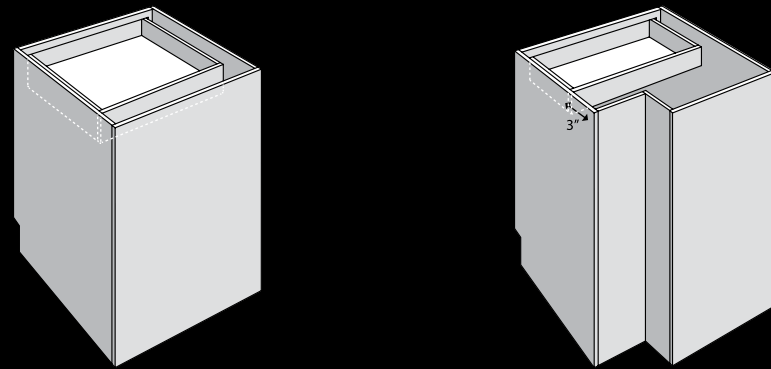


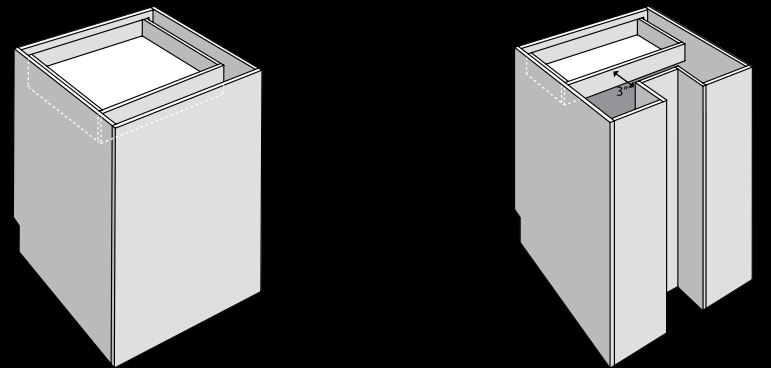
C H A S E - B A S E

Create a chase in a base cabinet

OPTION 1



OPTION 2



B E F O R E

A F T E R

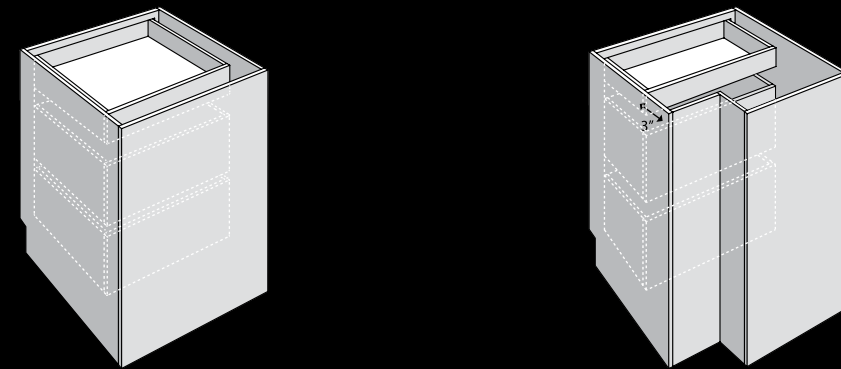
Option #1: 2-sided chase  
A chase is cut out of the cabinet and the opening is covered. The shelf around the chase is cut and the drawer depth is reduced until they are 3" from the chase.  
Note: customer must provide drawing.

Option #2: 3-sided chase  
A vertical chase is cut and the opening is covered. The shelf around the chase is cut and the drawer depth is reduced until they are 3" from the chase.  
Note: Customer must provide drawing.

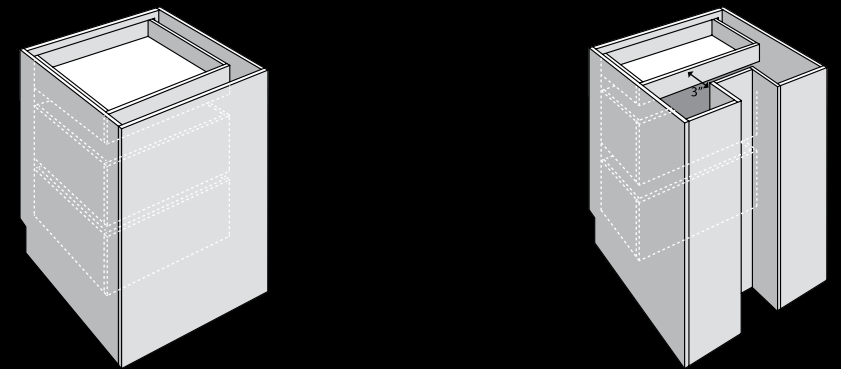
C H A S E - D B A S E

Create a chase in a drawer cabinet

OPTION 1



OPTION 2



B E F O R E

A F T E R

Option #1: 2-sided chase  
A chase is cut in the cabinet and the opening is covered. Drawer depth is reduced until it is 3" from the chase.  
Note: customer must provide drawing.

Option #2: 3-sided chase  
A vertical chase is cut and the opening is covered. Depth of drawer is reduced until it is 3" from the chase.  
Note: Customer must provide drawing.