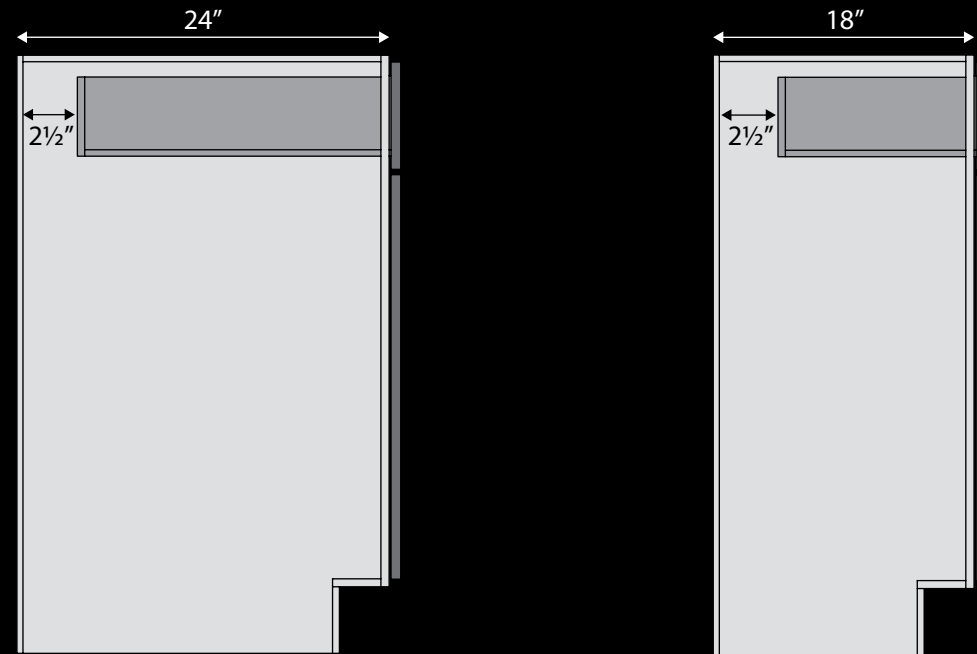


C U T - B A S E

Reduce depth of base cabinet (min. depth 12")



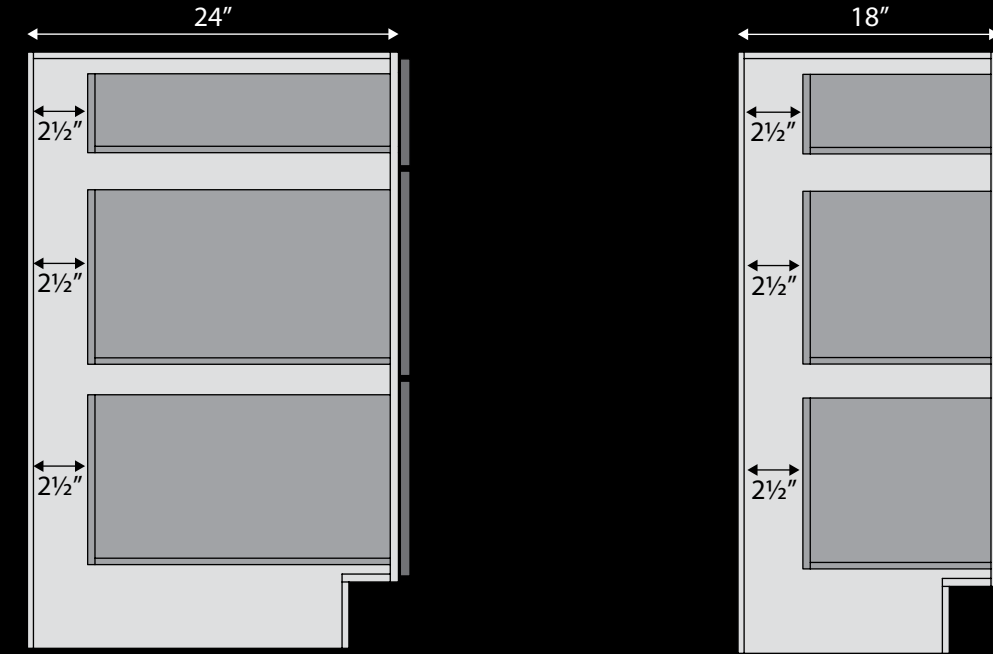
BEFORE → AFTER

The standard measurement for a Fabuwood base cabinet is 24" deep. Fabuwood will customize the cabinet depth per customer requirements. Generally, customizations are done in 3" increments, but can also be done to a custom size, such as 16", 17", or even 17 1/2" deep. Base cabinet must have a minimum depth of 12".

The drawer box will be cut to 3" less than the cabinet depth. For example, if base cabinet is cut to 18" deep, the drawer box and slides will measure 15" deep. To accommodate the drawer slides, the drawer box can only be cut in 3" increments.

C U T - D B A S E

Reduce depth of drawer base cabinet (min. depth 12")



BEFORE → AFTER

As with a base cabinet, Fabuwood offers the option to cut the depth of a drawer base cabinet to customer specifications. The depth of all three drawer boxes will be cut

3" less than the cabinet box. For example: When a cabinet is cut to 18" deep the drawer boxes and slides will be 15" deep. The minimum depth of a drawer base cabinet must be 12".